

BRI Thoracic surgery service update

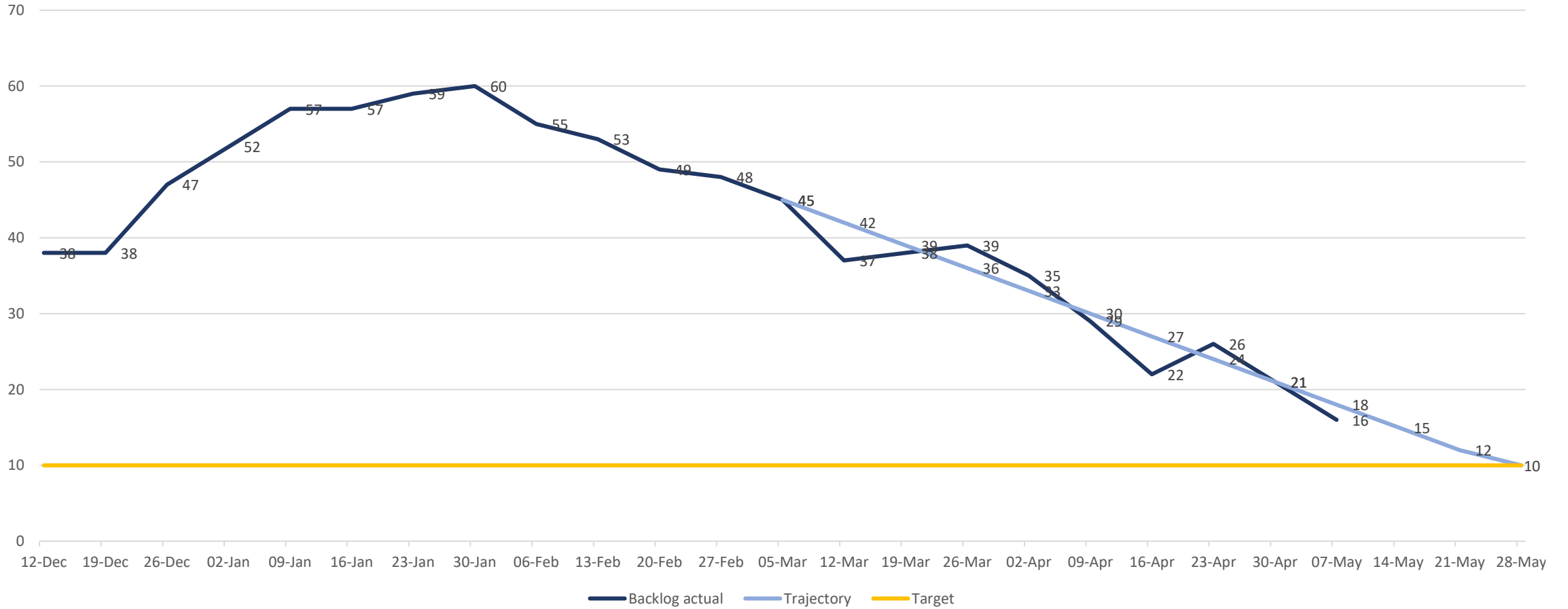
Stylianos Gaitanakis

Locum Consultant Thoracic Surgeon

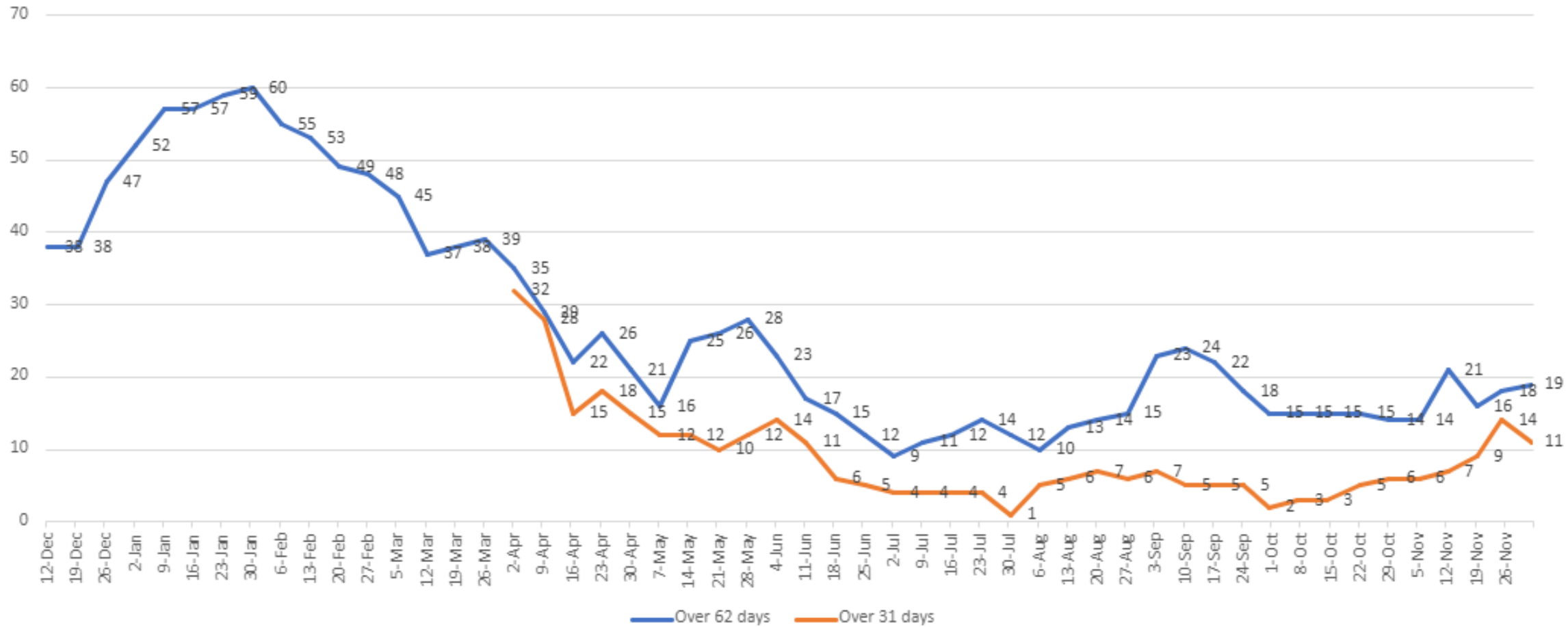
Bristol Royal Infirmary



Thoracic Surgery 62 day backlog trajectory



Thoracic Surgery cancer pathway backlogs



Measures employed



EXTENDED LISTS:
MONDAY, WEDNESDAY
AND ROBOTIC



GLANSO LISTS ON MOST
OF THE WEEKENDS



4 ADDITIONAL MONTHLY
LIST TO ACCOMMODATE 6
TH CONSULTANT



CHANGES IN CONSULTANT
JOB PLANS NOW AND IN
THE FUTURE

Theatre

New VATS instruments (8 complete sets)

3D operative preplanning (for segmentectomies)

Robotic surgery led to initial decrease of LOS

First 100+ cases done with no major issues

Powered staplers trial

Nav Bronch: C arm time under consideration

Cryo biopsy

Laser

Theatre refurbishment

LVRS

PLANS UNDERWAY
TO RESTART THE
SERVICE:

EBV AND LVRS
(SURGERY)

FULL SUPPORT
FROM THE
DIVISION

Team expansion

Lung cancer nurse employed

Lung MDT navigator

ANP (in the process)

6 doctors in training

6 consultants

Ward capacity

Nurse led follow up



PRESENT IN SOME SWAG
REGIONS



AIM TO DELIVER IT ACROSS
THE ALLIANCE WITH BUSINESS
CASES TO SUPPORT IT

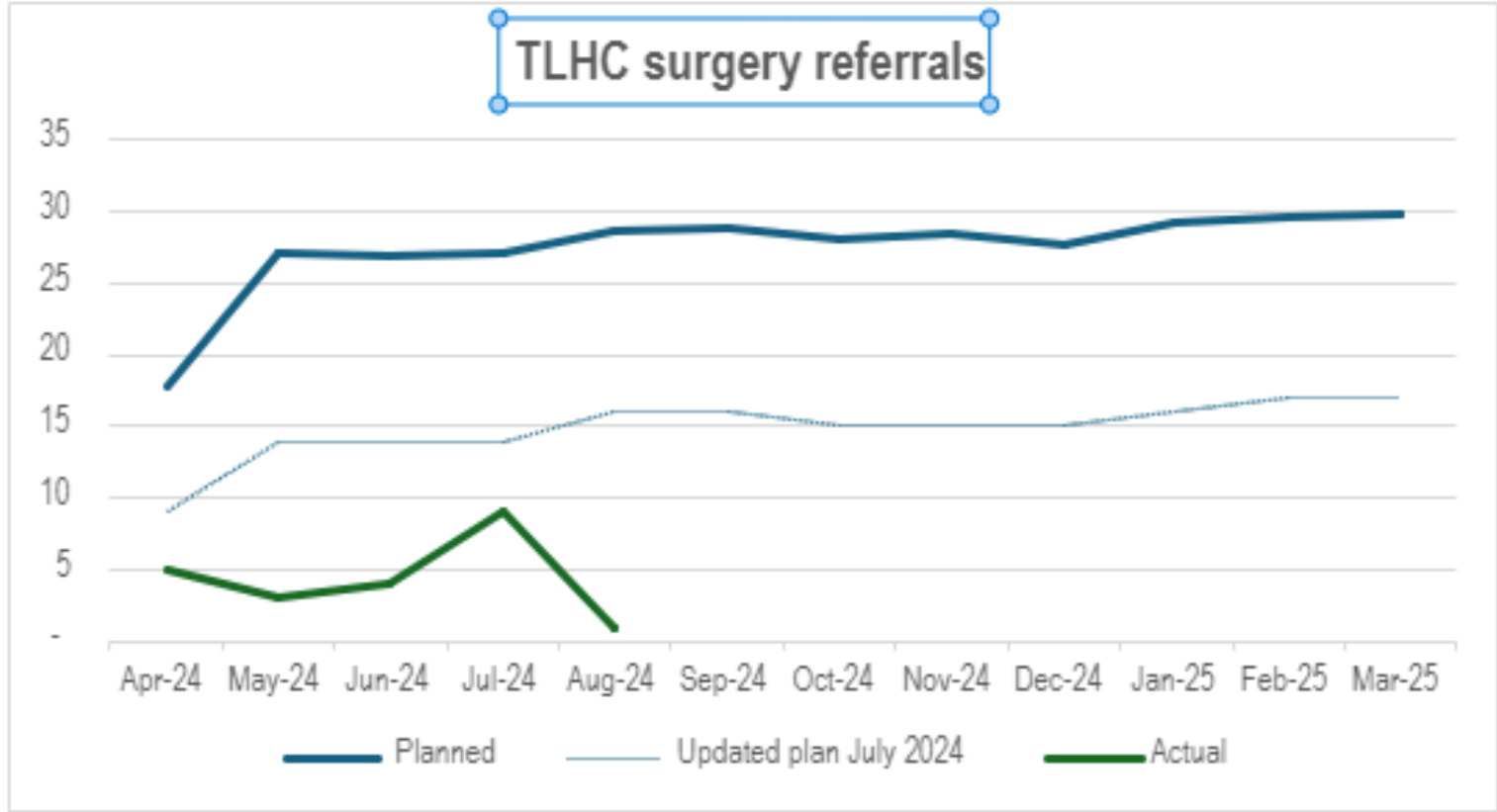


PATIENT TO BE D/C FROM
SURGERY



SURGEON'S TIME
REALLOCATED

TLHC model
v actual



Forward planning

Second robot

Additional lists in 2025

Rapid BRI clinics

New patients to be seen locally

An anatomical illustration of a human heart and lungs. The heart is rendered in white with black outlines, showing its four chambers and major blood vessels. The lungs are shown in a dark, textured style with intricate line work representing the bronchial tree and pulmonary vasculature. A small orange horizontal bar is located in the top left corner.

Thank you!!!